

Paynes Shipyard



Proposed Massing Visuals

Emerging plans respond to the local context providing a sensitively designed residential-led development of 179 homes and live/work units, retaining the boundary wall whilst opening up views across to Spike Island and Clifton Suspension Bridge.

The proposed form of development seeks to create an architectural rhythm along the river's edge and includes the potential use of gallery spaces on the western façade.

The increased permeability of the site for the community, including a walkway through the site along the boundary wall, will create a welcoming space to the community and those passing by.

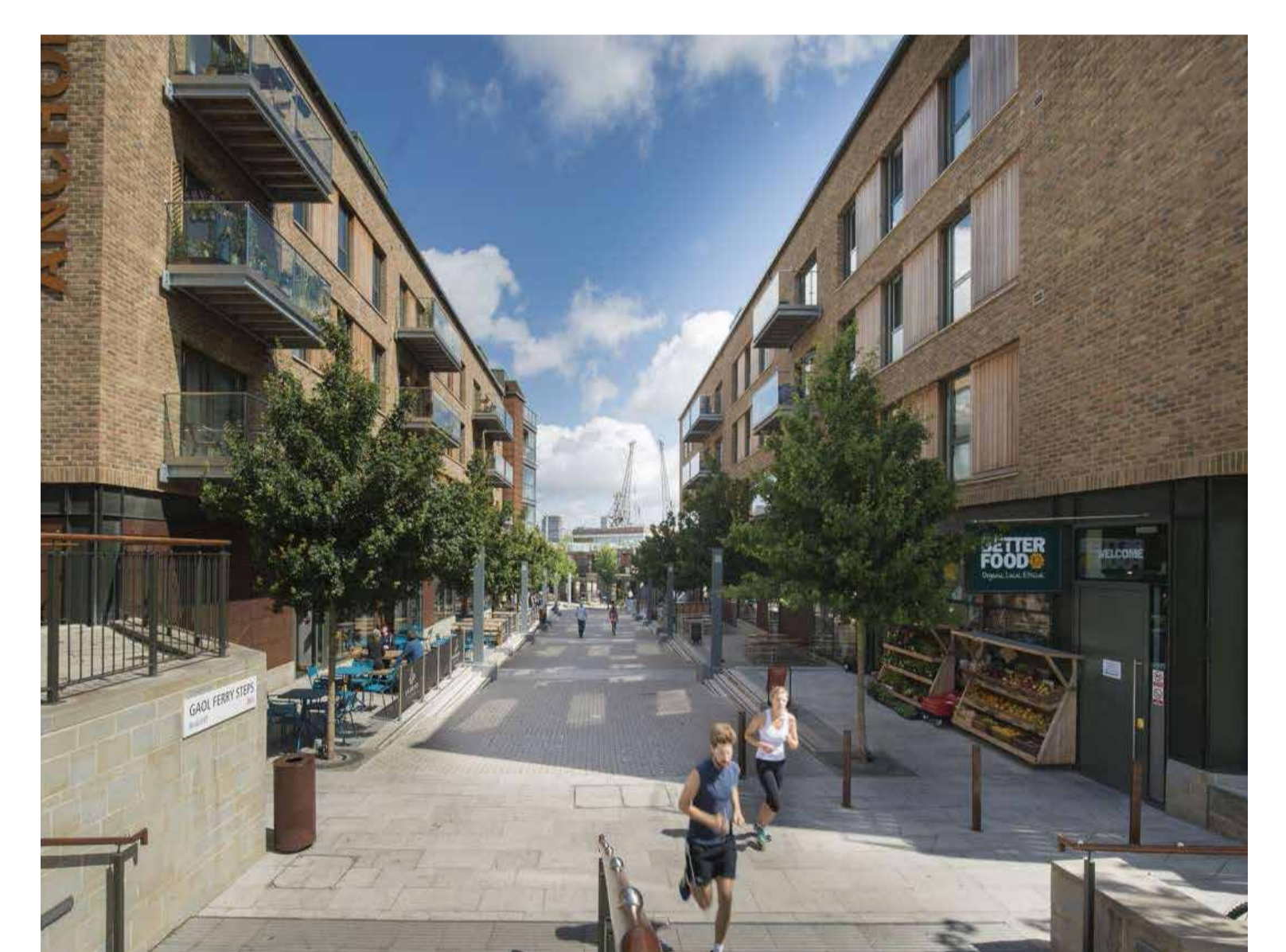
The development of Paynes Shipyard has been shaped to create a catalyst for wider development of the Western Harbour growth area along Coronation Road without prejudicing future development proposals.



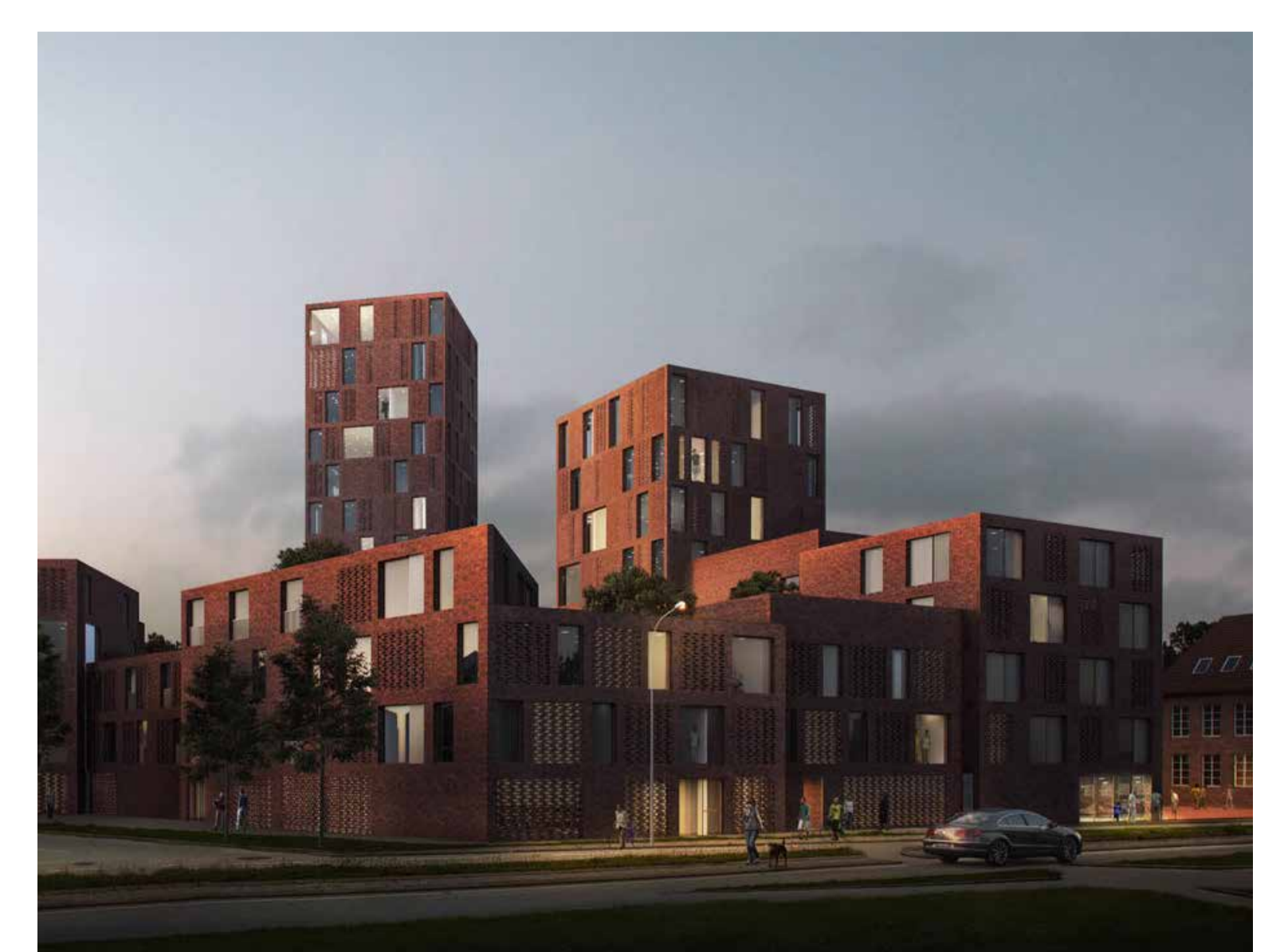
Existing view from Spike Island
View 1 from Spike Island



Existing view from Spike Island
View 2 from Spike Island



Existing view from Coronation Road
View 3 from Coronation Road



Existing view from Spike Island
View 4 from Spike Island